

HILL HOUSE DAY CAMP

Success Guide

DROP OFF/PICKUP

FIREHOUSE DOORS

127 MOUNT VERNON STREET

9AM - 4PM (REGULAR DAY)

8AM - 5:30PM (EXTENDED DAY)

**ADULTS MUST BE LISTED ON !!
THE AUTHORIZED PICKUP FORM,
!! HAVE ID, AND SIGN IN & OUT**

BRING DAILY:

- Nut free snack
- Nut free lunch
- Extra snack for extended day campers
- Labeled water bottle
- Labeled backpack your camper can carry
- Leave toys & electronics at home

MONDAYS & TUESDAYS

- Optional: wear bathing suit, towel, water shoes, change of clothes

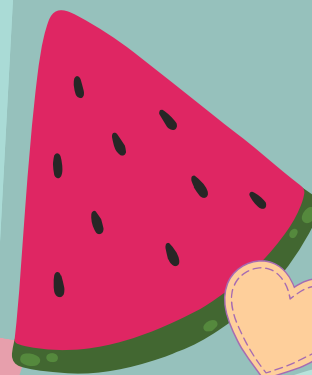
THURSDAYS

- Wear Camp T-Shirt

FRIDAYS

- Wear Fun Friday Theme
- For 9+: wear bathing suit, towel, water shoes, change of clothes

INSTAGRAM:
@HILLHOUSEBOSTON



Contact Jamie Kelly
with questions
jkelly@hillhouseboston.org